

Health & Wellbeing.

Workplace Furniture Collection



Health & Wellbeing.

furniture and accessories

desking

Benefits
Leap
Zoom
RoundE
MoveMe
Desk converters
Desk accessories

seating

Benefits
NV
X.22
X.77
Y.88
Eze Active Stool
Eze Wobble Stool
Leo Stool
Liv Stool

monitor arms

Benefits
Leap & Stealth

acoustics

Benefits
Hush Pods
Fluffo

desk screens

Benefits
Ciunas
Leap

sustainability

Plant A Tree

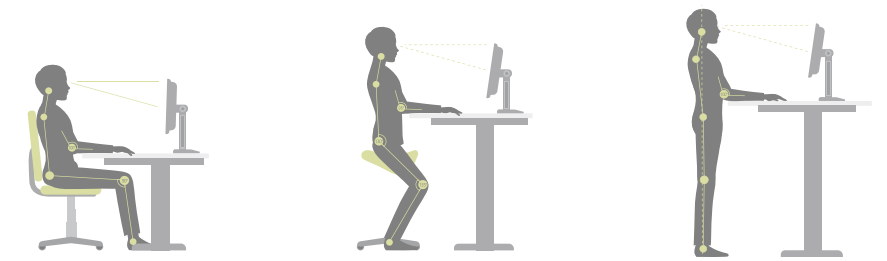
certification

GreenTag
Recolight

**Create
an office
environment
to improve
employee
health,
productivity
and
wellbeing.**



dynamic desking.



Wellbeing and ergonomics go hand-in-hand in today's people-centred, healthy workspaces.

Choosing furniture and accessories should not just be about aesthetics and price. Well-designed, properly engineered products are crucial in promoting positive employee mental and physical health which, in turn, drives up productivity and presenteeism.

Our Health & Wellbeing Collection has been curated to enhance workplaces.

What are the benefits of sit-stand desking?

Healthier heart

People who sit for more than 8 hours a day, double their risk of developing heart disease compared to those who sit for less than 4 hours a day.

Fights obesity

Prolonged sitting slows down the metabolism, promoting fat accumulation. Standing up intermittently at a sit-stand desk decrease the risk of obesity.

Better backs

Studies show that using height-adjustable desks can dramatically decrease chronic back pain caused by inactivity and prolonged sitting.

Reduce stress & fatigue

In one seven-week study, participants using standing desks reported less stress and fatigue than those who remained seated the entire work day.

Live longer

People who sit the most are at a 49% greater risk of dying early. Reducing sitting time to 3 hours per day can raise the average life expectancy by two years.

Improve circulation

Improve blood-flow by alternating between ergonomic office chairs that promote dynamic movement when seated and adjustable sit-stand desking.

Less stiffness

Leg and glute muscles are more active, therefore stronger, in users who alternate between sitting and standing; reducing long-term discomfort and strain.

Smarter thinking

Dynamic working encourages oxygen-rich blood to be pumped around the body, reversing the effects of inactivity where brain function slows down.



Leap sit-stand

An effortless height-adjustable desk system featuring single and back-to-back desks in a wide range of sizes, shapes and finishes.

Leap sit-stand desks are electrically adjusted to sitting or standing height, helping reduce the risks and problems associated with prolonged sitting. The range includes single, back-to-back, corner and K-top desks, all controlled by programmable touch-sensitive controls, featuring anti-collision software.

Leap is WEEE certified and meets EN527, EN 527-1:2011 and EN 527-2:2016 including motor durability test.



A Leap towards healthier working.

Users can pair the Leap Dongle with our smartphone app to control their desk height, set memory positions, create daily standing goals, track daily standing progress and set sedentary alerts to remind them to change position.



Leap single

Leap single is a sit-stand desk solution which can be electrically adjusted to prevent problems associated with prolonged sitting.

features

- Frame: white, black or silver.
- Width: 1200, 1400, 1600 and 1800 mm.
- Depth: 700 and 800 mm.
- Height-adjustable: 595 to 1245 mm.
- Intuitive touch-sensitive controls.
- Programmable memory unit.
- Optional return desk.

benefits

- Improved circulation.
- Reduces fatigue.
- Promotes productivity.
- Reduces stiffness and long term musculoskeletal discomfort.





Leap double

Effortless adjustability and individual control in a Leap's back-to-back, height-adjustable model.

features

- Frame: white, black or silver.
- Width: 1200, 1400, 1600 and 1800 mm.
- Depth: 800 mm.
- Height-adjustable: 595 to 1245 mm.
- Intuitive touch-sensitive controls.
- Programmable memory unit.

benefits

- Compact solution for two desks.
- Improved circulation.
- Reduces fatigue.
- Promotes productivity.
- Reduces stiffness and long term musculoskeletal discomfort.





Leap radial & K

**Utilise corner space in the office
or to create clusters of two
or four workstations.**

features

- Frame: white, black or silver.
- Radial Width: 1600 and 1800 mm.
- Radial Depth: 1200 mm.
- K Width: 1600mm.
- K Depth: 800 and 1000 mm.
- Height-adjustable: 595 to 1245 mm.
- Left and right handed options.
- Intuitive touch-sensitive controls.
- Programmable memory unit.

benefits

- User can stand closer to desk.
- Ideal footprint for corner spaces and clusters.
- Improved circulation.
- Reduces fatigue.
- Promotes productivity.
- Reduces stiffness and long term musculoskeletal discomfort.





Leap options

Leap towards healthier working.

Users can pair the Leap Dongle with our smartphone app to control their desk height, set memory positions, create daily standing goals, track daily standing progress and set sedentary alerts to remind them to change position.



Bluetooth Dongle



Cable spine



Magnetic cable protector



Wire Cable Basket



Return desk



Side modesty panels



Plain top



Scalloped top

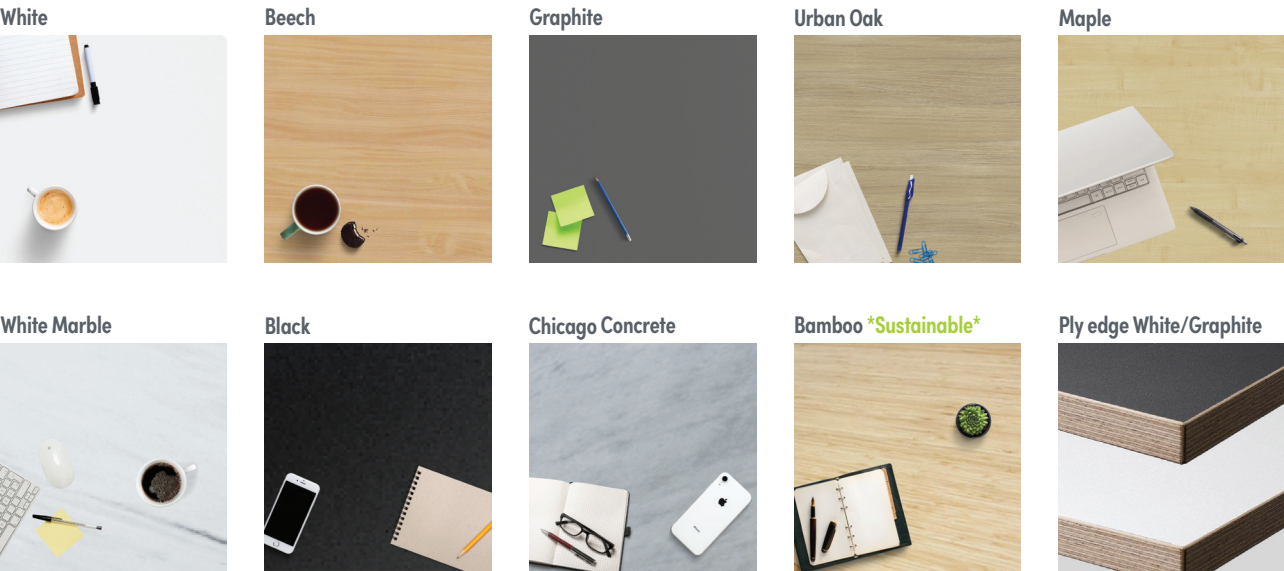


Portal top

Leap finishes

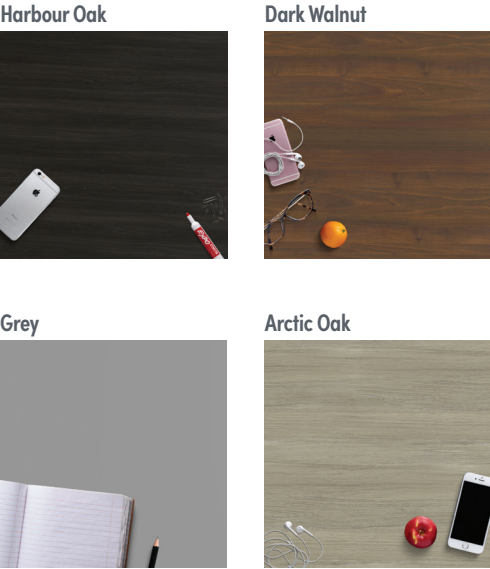
Stocked MFC

18 and 25 mm MFC



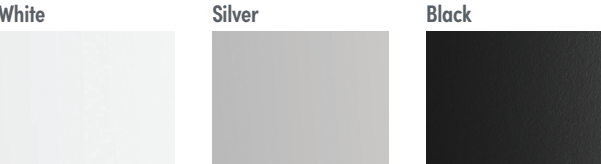
Made to order MFC

18 and 25 mm MFC



Frames

Solvent-free, eco-efficient paint finish



Cable management

For tidy, safe cable management.



Leap technical

certifications

Tested to EN527-1:2011 and EN527-2:2016 including motor durability test .

Complies with EMC Directive.

Complies with Low Voltage Directive.

Complies with RoHS Directive (Reach and PAHs).

WEEE certified

technical specification

Speed	40 mm/s
Lifting Power	Distributed load - 125 kg
Noise	< 50 decibels
Power	220-230 V
Control Box	Control unit 2 ports voltage input 220-240 VAC 50/60 Hz
Consumption	After 10 seconds the display turns off for low consumption <0.1 W
Safety	Six-axis anti-collision software prevents accidents when the user, or an item, comes into contact with the desk.
Displays	LED displays actual desk height.
Handset	Set a minimum and maximum height. Three programmable memory positions. Lock setting. Set sensitivity and retracted height.



Weee Compliancy

Leap products are WEEE certified (Waste Electrical and Electronic Equipment).

WEEE Ireland is a not for profit organisation, committed to delivering cost effective compliance since 2005. WEEE Ireland represents 74% of the electrical and electronic industry who have a Producer responsibility under the WEEE Directive 2012/19/EU to organise and finance the environmental management of their products at their end of life.

Since September 2008, all producers that sell electrical goods must take back the electrical products for free recycling. This is part of a European Directive which came into force in 2008, to encourage recycling across the EU. WEEE Ireland has been the Scheme of choice in Ireland maintaining majority market share across all

sectors and operates under the approval of the Minister for Communications, Climate Action and Environment.

Any electrical goods you purchase from us we will recycle for free at the end of their life cycle. By being WEEE registered we can help make an environmental difference by:

- Reducing the amount of waste going to landfill.
- Save the planet by reducing the effects of the hazardous materials in WEEE.
- Conserve natural resources as materials such as plastics, glass and metals are recovered for use again in the industry.

the most environmentally friendly sit-stand desks available.

Strong, beautiful and sustainable, Bamboo is the go-to material for eco-friendly manufacturing.

If you are conscious of how your material choices affect climate change then, naturally, bamboo tops are a great investment for your business and the planet.



Our bamboo desktop doesn't just make a sustainable statement, it's beautiful too with unique grain striations and stunning edge detailing

Unlike our other sit-stand top options, Bamboo offers both the scallop and portal cable management options. The Bamboo desktop is both aesthetically pleasing and environmentally conscious, and comes with a 10-year guarantee too.

Bamboo tops are available to order on our Leap, Zoom and RoundE height-adjustable desk ranges.





Zoom sit-stand

Zoom is designed to give you the perfect ergonomic workspace, effortlessly.

features

- Frame: white, black or silver.
- Width: 1200, 1400, 1600 and 1800 mm.
- Depths: 700 and 800 mm.
- Height-adjustable: 658 to 1185 mm.
- Electric motor.
- Intuitive dual button control.
- Anti-collision software.

benefits

- Improved circulation.
- Reduces fatigue.
- Promotes productivity.
- Reduces stiffness and long term musculoskeletal discomfort.





RoundE sit-stand

RoundE is a compact, space-saving solution, ideal for small or home office environments.

features

- Frame: white, black or silver.
- Width: 1200, 1400, 1600 and 1800 mm.
- Depths: 600 and 800 mm.
- Height-adjustable: 650 to 1150 mm.
- Electric motor.
- Intuitive dual button control.
- Anti-collision software.
- LED height display.

benefits

- Improved circulation.
- Reduces fatigue.
- Promotes productivity.
- Reduces stiffness and long term musculoskeletal discomfort.





MoveMe desking

MoveMe allows seamless height adjustment, allowing the user to switch from a sitting to standing position in a matter of seconds.

features

- Frame: white or graphite.
- Width: 1200 mm.
- Depth: 700 mm.
- Height-adjustable: 680 to 1125 mm.
- Electric motor.
- Intuitive button control.
- Anti-collision function.
- LED height display.

benefits

- Improved circulation.
- Reduces fatigue.
- Promotes productivity.
- Reduces stiffness and long term musculoskeletal discomfort.





Desk converters

Instantly convert your desk into a standing desk and get the benefits of a sit-stand lifestyle.



benefits

- Creates a height adjustable surface on existing desk.
- Reduces fatigue.
- Promotes productivity.
- Reduces stiffness and long term musculoskeletal discomfort.



Leap electric desk converter

features

- White finish.
- Designed for use by people 1500 – 2000 mm tall.
- Max load capacity 50 kgs.
- Max monitor size 25 inch
- Electric lifting, easy operation.
- Firm base for steady lifting
- Two USB charge ports.
- Spring wire design.
- Mobile phone slot.
- Single or double monitor accessory option.



Xtend desk converter

features

- White or black finish.
- Single or double monitor models.
- Anti-collision protection.
- Firm base to ensure steady lifting.
- Lifting range: 24 – 461 mm.
- Two USB charge interfaces .



active seating.

Including ergonomic solutions helps make employees more comfortable and increases productivity.

Why is ergonomics important?

Ergonomics is important because when you're doing a job and your body is stressed by poor posture, extreme temperature, or unsupported movement, your musculoskeletal system is put under strain. Our collection offers a wide range of ergonomic seating that has been designed to reduce strain on the body and improve worker health.

Posture support

Flexible, free-floating backrests, lumbar support, moulded seats and headrests encourage healthy, supported dynamic movement when working.

Productive and happy

Choosing office chairs that are ergonomically designed and comfortable can have a major impact on employee happiness, as well as productivity.

Size matters

Tailored adjustments give the flexibility to accommodate multiple body types and allows proper set up of the chair for each individual's measurements.

Improved circulation

When sitters vary their position it helps raise their metabolic rate and reduces risk of depression, heart disease, poor blood circulation and back pain.

Less pressure

Ergonomic chairs provide better pelvic support. This helps to reduce hip pressure by providing adjustable seat depth to support the hips and coccyx area.

Designed for choice

With options such as glides, castors, headrests, colours, base styles, and textiles, both form and function work in harmony for a stylish, healthy workplace.

Reduced pain

Using an ergonomic chair reduces back and neck strain because those important pain points are properly supported when upright and reclining.

Cool comfort

Smart textile innovations such as supportive mesh fabrics offer ventilation properties to help keep the user both cool, comfortable and properly supported.

Agile solutions

We also offer a range of height-adjustable ergonomic stools for intermediate height working to complement our sit-stand desking ranges.





NV task

With a range of frame and fabric colours to choose from, there's a NV chair for every space.

The NV chair is designed with comfort, style and quality. Available in black, grey and white frame with and without a headrest option. The modern ergonomic design of the NV chair makes it a great option for any office environment. The backrest ensures maximum flexibility and comfort while working at a desk.



features

- Back height adjustable.
- Seat height adjustable.
- Synchro mechanism.
- Optional headrest.
- Removable seat covers.

benefits

- Adjustable settings for tailored comfort.
- Adjustable lumbar for lower thoracic support.
- Ergonomic mesh backrest enables free air circulation and provides excellent support.
- Optional headrest keeps head and neck properly aligned, reducing neck strain.
- Healthy seating helps improve concentration, reduces absenteeism and improves wellbeing.





X.22 task

A visually stunning design which offers comfort and simplicity.

X.22's intelligent self-weight adjust mechanism adapts to suit each user automatically, making it an ideal chair for multi-shift, multi-user spaces.

Key Features:

- Unique mesh back design.
- Self-weight mechanism.
- Seat slide.
- Adjustable lumbar support.
- Breathable moulded foam.

benefits

- Adjustable settings for tailored comfort.
- A seat sliding feature encourages better back support by ensuring the back of the chair is in contact with the correct part of your back.
- Seat and backrest move independently to support and promote different sitting positions.
- Moulded upholstered seat for comfort.
- Ergonomic mesh backrest enables free air circulation and provides excellent support.
- Healthy seating helps improve concentration, reduces absenteeism and improves wellbeing.





X.77 task

The X.77 offers air chamber seat design technology for ultimate comfort in the workplace.

A perfect combination of Italian design and expertly engineered, the X.77 offers superior comfort with multiple functionality.

Key Features:

- Intelligent self-weight mechanism.
- Adjustable armrests.
- Seat slide.
- Air chamber Seat Design Technology.
- Adjustable lumbar support.

benefits

- Adjustable settings for tailored comfort.
- Dynamic movement helps prevent spinal strain and improves circulation.
- Adjustable armrests encourage you to keep elbows at a 90-degree angle. Doing so can take tension from your neck and shoulders, relieving you of any muscle aches.
- Moulded upholstered seat for comfort.
- Ergonomic mesh backrest enables free air circulation and provides excellent support.
- Healthy seating helps improve concentration, reduces absenteeism and improves wellbeing.





Y.88 meeting

Simple and innovative design.

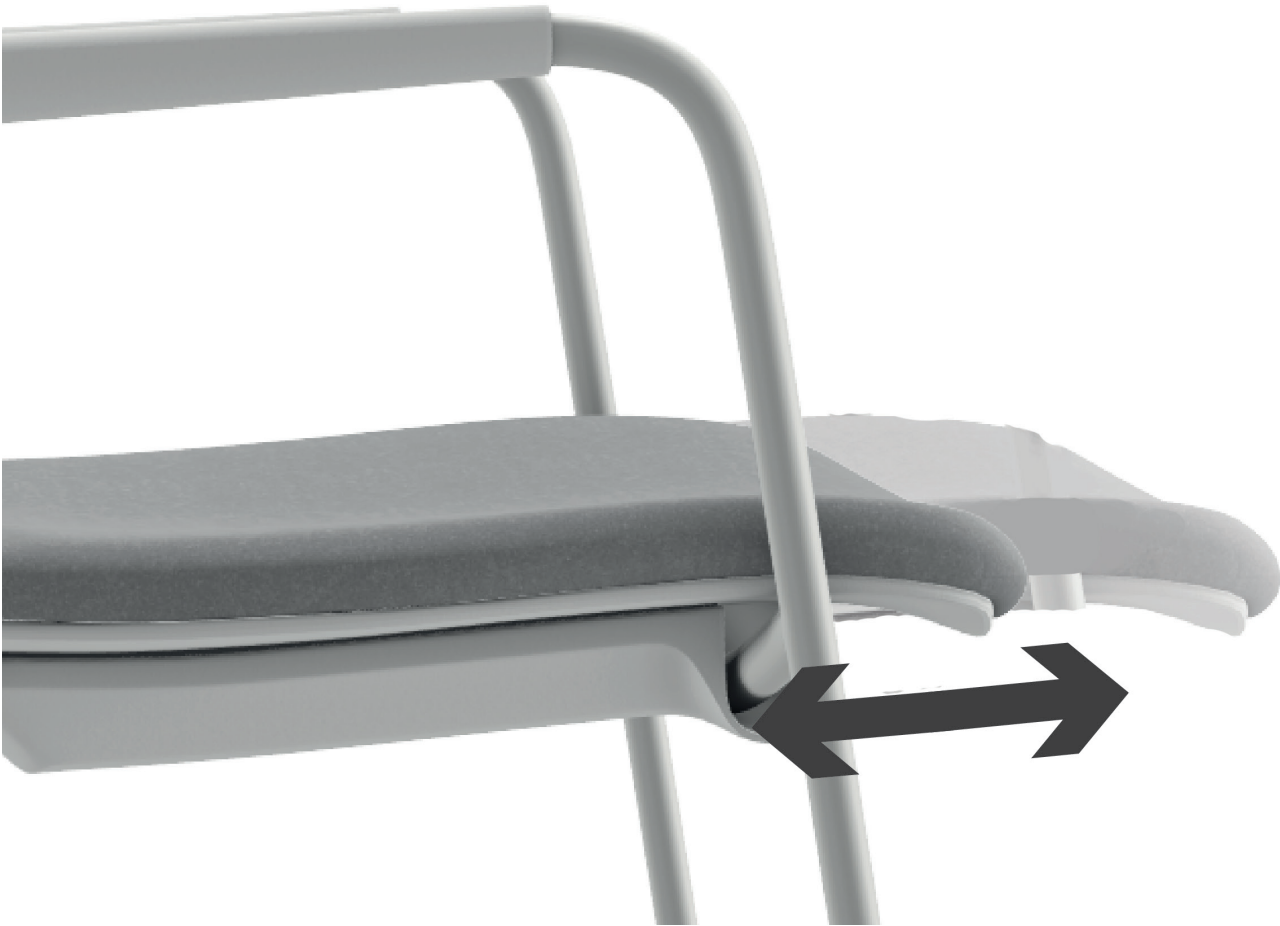
The Y.88 meeting chair offers responsive movement and real time comfort suitable for a range of office environments.

Key Features:

- Unique seat and back design
- Sliding syncro movement for ultimate user comfort
- Moulded foam seat and back

benefits

- Moulded upholstered seat for comfort and added support
- A seat sliding feature encourages better back support by ensuring the back of the chair is in contact with the correct part of your back.
- Armrests encourage you to keep elbows at a 90-degree angle. Doing so can take tension from your neck and shoulders, relieving you of any muscle aches.





AccisPro chair



AccisPro adjusts and promotes dynamic movement, in tune with the user's body.

The AccisPro is designed with an innovative and patented SmarHPS system to adapt to the user's body movements.

features

- Synchro mechanism and sliding and forward tilt seat.
- Multi-dimensional armrest adjustment.
- Height adjustable seat.
- Adjustable tension control.
- Lightweight design.
- 12 fabric groups, 6 mesh colours.
- Light grey or black frame options.
- Choice of hard or soft castors or glides.
- Optional headrest and lumbar support.

benefits

- Adjustable settings for tailored comfort.
- Dynamic movement helps prevent spinal strain and improves circulation.
- Seat and backrest move independently to support and promote different sitting positions.
- Moulded upholstered seat for comfort.
- Ergonomic mesh backrest enables free air circulation and provides excellent support.
- Healthy seating helps improve concentration, reduces absenteeism and improves wellbeing.





Violle task & visitor

Stylish design, intuitive controls, and a plethora of options make Violle a superb ergonomic task and visitor seating solution.

Violle offer a wealth of ergonomic adjustments to provide the user with support and comfort when working.



features

- Synchro mechanism.
- Backrest tilt lockable in five positions.
- Backrest tension control.
- Sliding seat.
- Seat and backrest tilt.
- Height and depth adjustable lumbar support.
- With or without height-adjustable armrests.
- A range of castors or glides.
- Black or light grey frame.
- Huge range of fabrics and colours.
- Optional mesh or fabric headrest.
- Optional coat hanger.
- Four or five star base options in a range of finishes.

benefits

- Adjustable settings for tailored comfort.
- Dynamic movement helps prevent spinal strain and improves circulation.
- Adjustable lumbar for lower thoracic support.
- Ergonomic mesh backrest enables free air circulation and provides excellent support.
- Optional headrest keeps head and neck properly aligned, reducing neck strain.
- Healthy seating helps improve concentration, reduces absenteeism and improves wellbeing.



Xenon task

The Xenon range is equipped with all the necessary mechanisms and adjustment options which you would expect, with the guarantee of full ergonomics.

The Xenon range includes swivel and high mesh backrest chairs, each ergonomically designed and provides comfortable support.



features

- Seat Height Adjustment
- Back Tilt Tension
- Adjustable Armrests
- Tilting Degree Adjustment
- Seat Slide
- Mesh Backrest

benefits

- Adjustable settings for tailored comfort.
- Dynamic movement helps prevent spinal strain and improves circulation.
- Adjustable lumbar for lower thoracic support.
- Ergonomic mesh backrest enables free air circulation and provides excellent support.
- Optional headrest keeps head and neck properly aligned, reducing neck strain.
- Healthy seating helps improve concentration, reduces absenteeism and improves wellbeing.



Xenon task



The Xenon range is equipped with all the necessary mechanisms and adjustment options which you would expect, with the guarantee of full ergonomics.

The Xenon range includes swivel and high mesh backrest chairs, each ergonomically designed and provides comfortable support.



features

- Seat Height Adjustment
- Back Tilt Tension
- Adjustable Armrests
- Tilting Degree Adjustment
- Seat Slide
- Mesh Backrest

benefits

- Adjustable settings for tailored comfort.
- Dynamic movement helps prevent spinal strain and improves circulation.
- Adjustable lumbar for lower thoracic support.
- Ergonomic mesh backrest enables free air circulation and provides excellent support.
- Optional headrest keeps head and neck properly aligned, reducing neck strain.
- Healthy seating helps improve concentration, reduces absenteeism and improves wellbeing.

Eze active stool



Complete your ergonomic office space with a height-adjustable active learning stool.

The non-slip sturdy base remains flat on the ground during use, and the handle under the seat makes it easy to adjust. Lean against your stool for support and comfort as you stand throughout your workday.

Key Features:

- Dynamic range of movement.
- 360-degree tilt, rotate and pivot.
- Air-lift piston mechanism.
- Quick seat-height adjustment.
- Non-slip weighted base.

benefits

- Allows you to sit, perch, and move as you work.
- The higher seating position from a stool allows the thighs to slope downwards, causing the lower back to be in a neutral position, allowing the spine to achieve its natural curve.
- A stool encourages 'Active Sitting', which helps to strengthen your core and back muscles.



Eze wobble stool



The ergonomic stool creates a dynamic, healthier, and innovative way of sitting.

A built-in gas spring allows you to stand up with little effort. The stool accommodates various heights while reducing fatigue and strain on legs while using a standing desk. With a tip-free base, the wobble stool offers the user a solid yet movable seat, guaranteed to provide you with the most modern and comfortable seat.

Key Features:

- Fabric upholstered seat.
- Relieves sedentary pressure for optimum comfort.
- Air-lift piston mechanism: for quick seat-height adjustment.

benefits

- Active seating encourages posture changes to reduce the negative effects of sedentary behaviour
- Strengthens core muscles
- Improve Posture
- Provides unconscious exercise without the need for regime
- Increases focus and concentration



Leo stool



The Leo Perch Stool takes stool seating to the next level with dynamic movement and adjustments.

Leo has a safe rocking ability – perfect for an active worker and suited for fast-paced workplaces. Leo Stool is height adjustable and is easily adjusted from standard seating to bench height in seconds.

Key Features:

- Adjustable stool height.
- Tilting base.
- Non-slip sturdy base.
- Premium quality materials used for the base, gas lift and seating.

benefits

- Enhanced moulded foam seat enhances comfort & support
- Allows you to sit, perch, and move as you work.
- Strengthen the user's core while encouraging better circulation.



Liv stool



Liv ergonomic wobble stool delivers comfortable yet active sitting in the workplace.

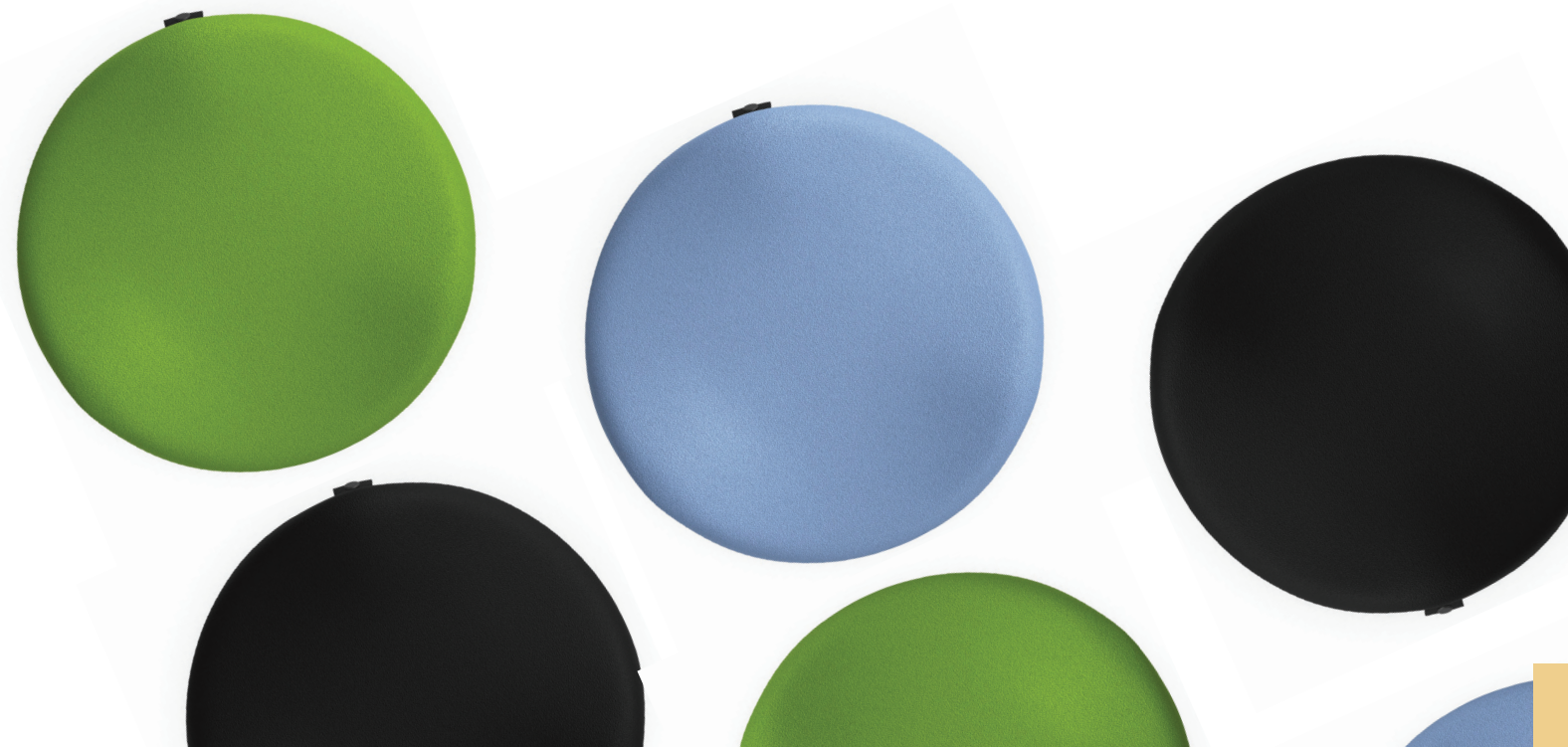
The Liv ergonomic wobble stool ensures that you can keep active while completing your daily tasks. This stool will strengthen your core while encouraging better circulation. It also boasts a sleek and stylish design, which will look great in any office.

Key Features:

- Adjustable stool height.
- Non-slip sturdy base.
- Premium quality materials used for the base, gas lift and seating.

benefits

- Strengthen your core while encouraging better circulation.
- Relieve Lower Back Pain – This leaning stool can hold your lumbar vertebrae in good position, which can relax your neck&shoulder muscle efficiently and relieve lower back pain.
- Improve Blood Circulation – Standing while you work can relieve muscle tension , relax joints and in turn blood circulation will improve.



monitor arms.

Monitor arms are the perfect solution for your computer work station. No longer do you have to slouch while looking at a computer screen or deal with unnecessary clutter.

Monitor arms attach to desks and provide convenience, comfort, and ergonomics in your office / home office. They are height adjustable to suit your needs!

Work Efficiency

It can be frustrating to switch back and forth between multiple different windows while you work. With a monitor mount, you can spread your windows out across two screens.

Sit-Stand Versatility

If you have a height-adjustable sit-stand desk, using a monitor arm is even more important. The ideal ergonomic position for your monitor changes whether you're sitting or standing.

Space-Saving Desk Set-up

Installing a Monitor Arm is easy and non-permanent. Just position the arm on the back of the desk with the C-clamp facing the front. You'll be well on your way to having a clutter-free desk.

Reduced Neck Pain

We've all experienced the feeling of spending hours at our desk absorbed by a project, only to develop a neck pain. This discomfort can be cured with an adjustable monitor arm.

Enhanced Focus

Employees love dual monitor setups because they can spread their work across three screens. You will find it easy to focus on your work and easier to change between different files.

Adjustable Monitor Settings

An adjustable monitor in your office helps to promote healthy posture, which reduces musculoskeletal pain and prolongs productivity.

Prevent Eye Strain

Staring at a screen all day can cause tired eyes, particularly if it is a screen that is too close or too far away. Stop eye strain by using a monitor arm to find the correct placement for your screen.

Improved Posture

Sitting at a desk with your monitor in the wrong position can lead to poor posture habits. When your monitor is ergonomically aligned, you will notice the benefits right away – increased comfort.

Better Angle On Video Calls

Monitor arms can help you achieve a better viewing angle while on video calls. Our products are designed with tilt and swivel, height adjustment features to maximise your viewing.





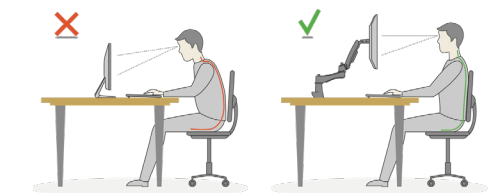
Monitor arms

Monitor ergonomic arms support your monitors and allow you to move and adjust the height, angle, or position of your monitor.



benefits

- Adjustable height, angle and position.
- Prevents eye strain.
- Reduces neck pain.
- Improves posture.



Leap monitor arms

features

- Sleek and streamlined design
- Compatible with VESA
- Height and Tilt adjustable by 75 degrees up and 45 degrees down
- Swivel of 90 degrees
- Easy installation
- Environmentally friendly design
- Stable mounting to desk

Stealth monitor arms

features

- Easy height adjustment on the vertical pole
- Fully adjustable arm
- 60 degree adjustable plates for the two monitors
- Easy installation and stable placement



acoustic environment.

A good acoustic environment can increase our ability to learn and work.

Many companies are unaware that making a few adjustments to correct the acoustic landscape of the office can have wide-reaching benefits, such as improved staff productivity, concentration and wellbeing.

The office environment for focused work needs to be an area of minimal distraction with high acoustic absorption. There should be individual work spaces with visual barriers such as room dividers, and acoustic furniture to reduce noise transmission from other zones.

Improve concentration

It can take 23 minutes for the average worker to regain concentration. Good room acoustics will ensure that noise is absorbed before it has the chance to distract someone.

Improved privacy

Just because the door is closed doesn't necessarily mean that conversations can't be heard. Good room acoustics will stop voices from travelling and ensure confidentiality.

Productive and happy

With less distraction, employees will be far more focused, productive and happy. Unwanted noise is proven to increase stress levels, good acoustics can help to suppress this noise.

Increase office performance

High noise levels have been linked with lower office performance due to the increased risk of distractions. Improving acoustics makes it easier for staff to concentrate and will boost office performance.



Hush: flexible acoustic spaces designed for concentration, privacy and comfort.

Sound-proofed panels and laminated acoustic glass panels reduce noisy distractions, helping you focus and providing privacy.

Hush booths have anti-virus coating and effective ventilation to protect and keep you cool while you work.

Ventilation system keeps the air inside fresh at all times.

Smart power and lighting for efficient energy and working.

Scalable modules for flexible workspaces.



HushPhone



Office phone calls have never been so comfortable with HushPhone.

By creating space for solo phone calls or virtual meetings the HushPhone makes a shared space personal. One that is thoughtfully designed to offer the flexibility of a soundproof room that can be assembled and placed anywhere you see fit.



1 User



Private video conferences



Trade negotiations



Confidential telephone conversations

HushPhone Dimensions
1000w x 900d x 2230h mm



1. LED light with motion sensor
2. Ventilation with motion sensor
3. Power module (1 power, 2 USB)
4. Tempered, laminated acoustic glass door with high quality handle
5. Acoustic glass rear wall
6. Ergonomic shelf/storage
7. Fold-away laptop table
8. Acoustic lined fabric panels
9. Integral carpeted floor
10. Optional floor mounted stool
11. Leveling feet
12. Anti-collision door marking
13. Integrated castors



HushWork



HushWork acoustic office pod is an ideal, 1-person space for deep work and heads-down tasks.

With ample power sockets and strong wifi signal, connection is never lost. It creates a comfortable workspace allowing individuals to detach from bustling environment and office noise.



1 User



Focused work that requires concentration



Video conferences



Sit and stand work



1. Led ceiling light with dimmer
2. Option to add Bluetooth speaker
3. Ventilation system activated by a presence sensor
4. Anti-collision door marking
5. Tempered, laminated acoustic glass door with high quality handle
6. Desk with manual adjustment height range 670-1250 mm / 26-49 in
7. Independent, manual smooth lighting and ventilation rotary knobs
8. Power module (power+USB+RJ45)
9. Laminated front and back acoustic glass panels
10. Leveling feet
11. Removable front panel for pallet jack

Why is HushWork a unique office solution?

mobility.

The HushWork pod has been cleverly designed so it be relocated without having to disassemble.

acoustics.

The upholstery and double glazed door with acoustic film absorbs sound for a quiet space, conducive to concentration.

dimensions.

With a footprint of less than two square meters, HushWork easily fits almost any office space.

ergonomics.

Manual height-adjustment system for dynamic sit/stand working with a smooth transition between desk heights.

HushWork Dimensions

1600w x 1300d x 2300h mm

HushWork.Sit&Stand Dimensions

1600w x 1300d x 2300h mm



HushHybrid



For better video conferences and hybrid work.

HushHybrid is a solution dedicated to individual work in focus and longer videoconferences, as well as online training and webinars. The cabin has a comfortable, soft seat that helps to maintain an upright body position, and the handle mounted in the product allows you to hang an all-in-one computer or a monitor.



1 User



Private calls and video conferences



Webinars, both as a speaker and participant



Focused work that requires concentration

HushPhone Dimensions
1244w x 900d x 2230h mm



1. LED ceiling light run by motion sensor
2. Efficient ventilation run by motion sensor
3. Tempered, laminated acoustic glass door with high quality handle and hinges
4. Anti-collision glass manifestation safety sticker
5. Laminated acoustic glass rear panel
6. VESA mount
7. Power module (single power, double USB)
8. Control panel
9. Tabletop
10. Acoustic lined fabric panels
11. Upholstered soft seating
12. Integral carpeted floor
13. Leveling feet
14. Integrated castors



HushTwin



HushTwin is made of two conjoined pods, each with its own sofa, desk, lighting, and ventilation.

HushTwin is larger than hushPhone but smaller than hushWork; both 'halves' provide the essential amount of space to work. For teams who need multiple private work areas in their small office, hushTwin delivers in its efficient use of space.



2 Users



Focused work that requires concentration



Video conferences



Confidential telephone conversations



HushTwin Dimensions

2150w x 900d x 2300h mm



1. Led ceiling light with dimmer
2. Ventilation system activated by a presence sensor
3. Anti-collision door marking
4. Laminated acoustic glass rear wall
5. Tempered, laminated acoustic glass door with high quality handle
6. Acoustic lined fabric panels
7. Independent, manual smooth lighting ventilation rotary knobs
8. Power module (power+USB+RJ45)
9. Two upholstered benches
10. Leveling feet
11. Removable front panel for pallet jack

HushMeet



Conduct meetings in a comfortable and secure environment with advanced acoustic solutions.

Additionally, the closed space provides a feeling of privacy which ensures that everyone within the HushMeet can feel at ease. The pod is an excellent alternative to small conference rooms and can be placed wherever you want.



1-4 Users



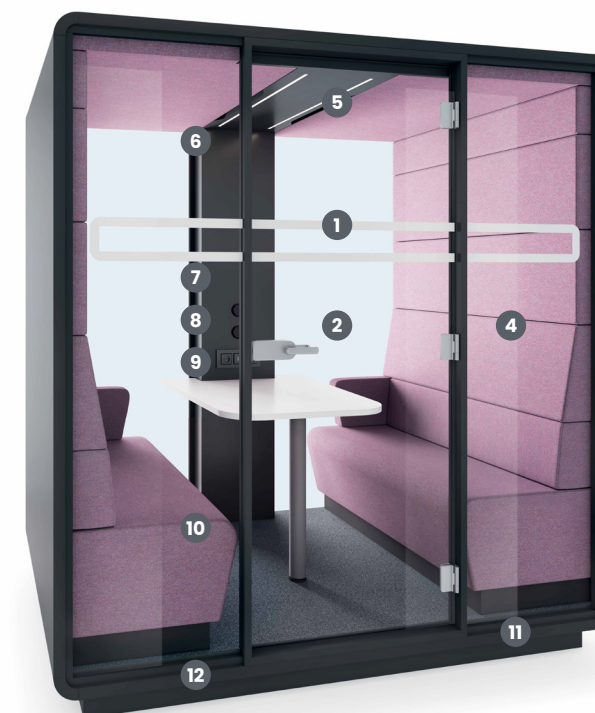
Private meetings



Creative work



Group video conferences



1. Anti-collision door marking
2. Tempered, laminated acoustic glass door high quality handle
3. Laminated front and back acoustic glass panels
4. Acoustic lined fabric panels
5. Led ceiling light with dimmer
6. Ventilation system activated by a presence sensor
7. Option to hang a TV screen on the central panel
8. Independent, manual smooth lighting and ventilation rotary knobs
9. Power module (power+USB+RJ45)
10. Two upholstered benches
11. Removable front panel for pallet jack
12. Leveling feet

Why is HushMeet a unique office solution?

mobility.

The HushMeet pod has been cleverly designed so it be relocated without having to disassemble.

facilities.

HushMeet is an independent space powered by electricity, providing comfortable conditions during meetings.

acoustics.

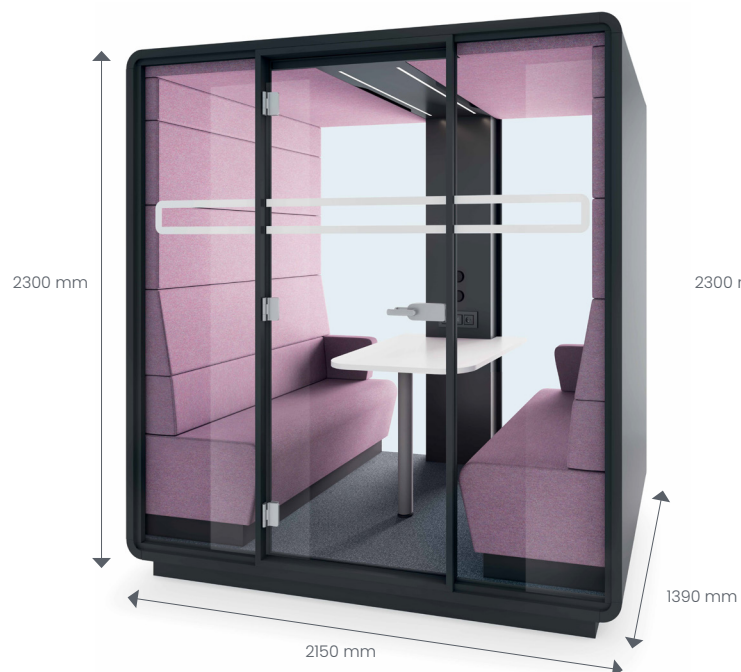
The upholstery and double glazed door with acoustic film effectively absorb sound.

dimensions.

Its compact footprint only occupies the space needed for two standard workstations.

HushMeet Dimensions

2150w x 1390d x 2300h mm



HushMeet.S Dimensions

2150w x 900d x 2300h mm



HushMeet.L



Important meetings deserve convenient space. HushMeet.L is the perfect alternative to traditional conference rooms.

Hush Meet L provides a large acoustic pod created for meetings where up to 8 people can comfortably meet. The large floorspace allows you to build your perfect meeting pod.



Up to 8 users



Highly private meetings



Formal meetings



HushMeet.L Dimensions

2600w x 1800-3600d x 2300h mm



1. Laminated front and back acoustic glass panels
2. Tempered, laminated acoustic glass door with high quality handle
3. Acoustic lined fabric panels
4. Led ceiling light with dimmer
5. Ventilation system activated by a presence sensor
6. Option to hang a TV screen on the central panel
7. Independent, manual smooth lighting and ventilation rotary knobs
8. Power module (power+USB+rJ45)
9. Optional – conference table
10. Removable front panel for pallet jack
11. Leveling feet
12. Anti-collision door marking



HushMeetOpen



HushMeet.open is designed for informal meetings in the office.

It is the independent space, ideal for conversations in small teams. The semi-open form is more affordable for users, and ergonomic sofas ensure comfort during longer meetings. HushMeet.open promotes creativity and openness to new ideas.



1-4 Users



Private meetings



Creative work



1. Acoustic lined fabric panels
2. Led ceiling light with dimmer
3. Option to hang a TV screen on the central panel
4. Independent, manual smooth lighting rotary knob
5. Power module (230V+USB+RJ45)
6. Compact desk
7. Two upholstered benches
8. Leveling feet
9. Removable front panel for pallet jack
10. Laminated back acoustic glass panels

FLUFFO
fabryka miękkich ścian



Fluffo panels

Create a beautiful, functional and safe work space.

All Fluffo products have acoustic properties characterised by high sound absorption coefficient. They work perfectly in spaces, which require the improvement of overall interior acoustics: there is a problem with echo, reverberation or noise.

Our experience shows that covering as little as 20 to 40% of walls with Fluffo panels will work wonders within a room with a reverberation problem. The echoes are reduced and the room becomes cosy and quiet

Acoustics

Fluffo products absorb sound effectively, owing to the sound absorbent materials they are produced from. The soundproofing properties of the panels are tested and accredited.

Diversity

Fluffo panels come in many shapes, sizes and colours. They have both decorative and acoustic applications. The numerous options and colours offered give you the freedom to create any combination.

Comfort

Fluffo is a new concept for creating cosy interiors. All Fluffo products are covered with a velvet soft finish made up of tiny colourful fibres.

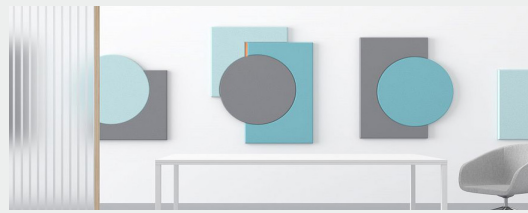
Design

Fluffo is a masterpiece of elegant and creative design. Just a few elements will transform the character of your entire office.



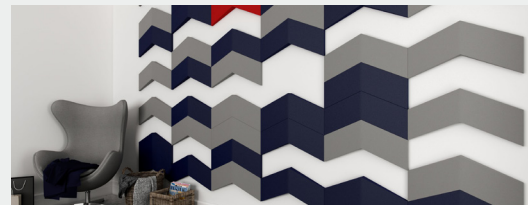


Fluffo panels



Fluffo Art

3D artistic art pieces that can add to the decor of any room.



Fluffo 3D Panels

Create your own individual design & colour scheme.



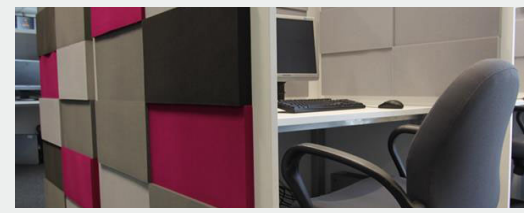
Fluffo Air

Overhead elements.



Fluffo Glass

Glass surface panels



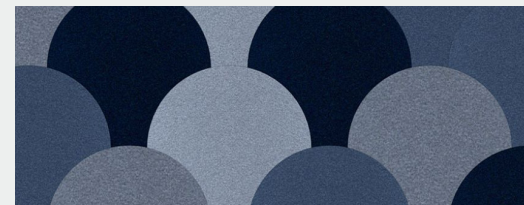
Fluffo Soft Edge Flat Panels

Soft wall panels with flat or curved edges.



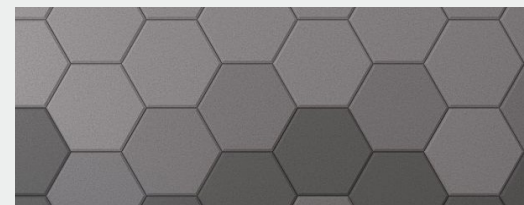
Fluffo Web

suspended, acoustic curtains.



Fluffo Fire Resist

Fire retardant office wall panels.



Fluffo Izo

Sound insulation panels.

desk screens.



Office screens can help boost productivity, increase efficiency and provide employees with privacy.

Office screens provide the most cost-effective way to create privacy in an open plan environment. Open plan layouts are great for productivity but they can create noise, disrupt employees and minimise privacy. Integrating office screens into an open plan office can offer an excellent solution – they provide privacy, improve air circulation, enhance conversational privacy and increase visual privacy.

What are the benefits of desk screens?

Privacy

Desk screens give everyone the feeling of personal space and privacy at your desk.

Display

Thanks to screens being made in fabric, they can also be used to display items such as paper, wall calendars and other materials for a clutter-free desk space.

Noise Reduction

Our noise-reducing acoustic desk screens are designed to reduce noise by preventing sound from travelling easily through the screen.

Social Distancing

Remaining a safe distance apart in work environments, particularly offices, can be a real challenge, which is why desk screens are an important feature in the office.

Design and Use of Colour

Office screens can also be used to liven up the work space or express your brand's personality and values.

Organisation

It's hard to work effectively in an untidy environment. create an organised workspace using desk screens to divide up large desk banks can boost productivity.

Security

Strategically placed screens can help to protect sensitive information in open plan and shared offices.

Productivity

Employees can make their space their own. And, having a space that's personal can in turn can increase happiness and productivity, so it's win-win.



Ciunas desk screens

Ciunas screens deliver privacy to desk user and provide an excellent acoustic solution to reduce noise in any office space.

features

- Manufactured from fabric covered acoustic panels.
- Choice of silver or white clamp brackets for single or bench desks, or with movable desktop brackets.
- Ideal for desks from 800 to 1800 wide.

benefits

- Creates privacy for desk users,
- Provides sound-proofing to help reduce noise, improve acoustics in the room and aid concentration.
- Freestanding surface brackets offer a mobile screen solution that can be used on desks or tables without fixing.



Ciunas desk screen

800/1200/1400/1600/1800w x 400h mm





Leap desk screens

Leap Screens are a modern, frameless, cost effective screen to compliment sit stand desks.

features

- Modern frameless design
- compliment sit stand desks
- Two variations: Leap Bench Screen and Leap Mounted Screen,
- Screens are fully upholstered
- Available in a range of premium fabrics

benefits

- Creates privacy for desk users,
- Provides sound-proofing to help reduce noise, improve acoustics in the room and aid concentration.



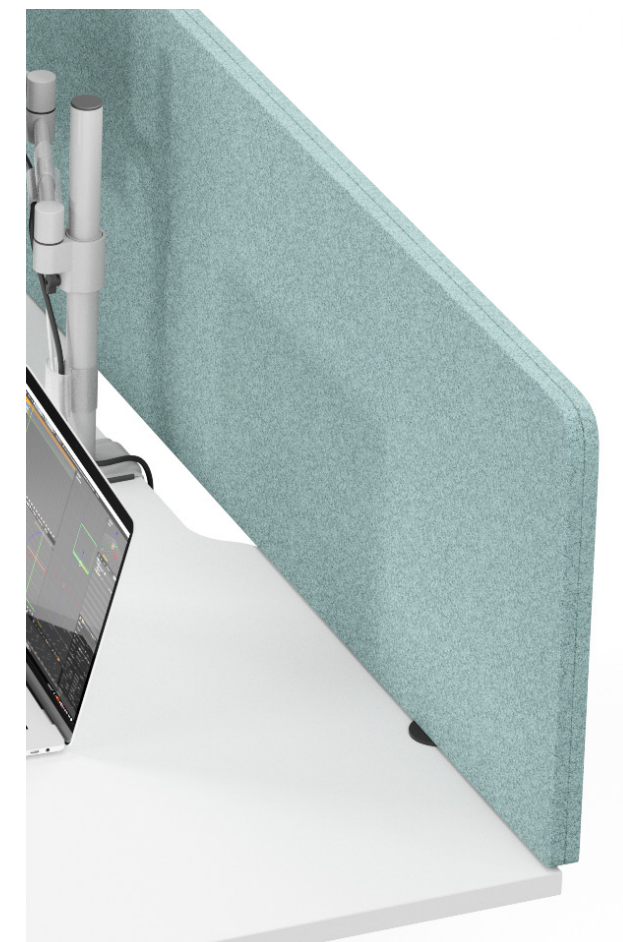
Leap Mounted screen

1200/1400/1600/1800w x 380/480h mm



Leap Bench screen

1200/1400/1600/1800w x 850h mm



for every desk
we sell, we will
plant a tree.

- RESTORE
NATIVE
FOREST
- PROMOTE
ACCESS TO
MEDICINAL
AND OTHER
FORESTRY
PRODUCTS
- INCREASE
FOOD
SECURITY
- CREATE
ACCESS TO
CLEAN WATER



Sustainability

We partner with the Global Climate Institute, where we plant a tree in Tanzania for every desk sold.



Why Tanzania?

The deforestation rate in Tanzania is amongst the highest in East Africa. For a country where the forests typically help fuel the national economy, this degradation has a dramatic impact on rural communities, causing major food insecurity.

Luckily, tree planting proves to be one of the most versatile and cost effective means to improve the quality of life for people living in impoverished areas, as the trees will provide decades of food, medicine, shade, firewood, carbon fixation, environmental enhancements, wildlife habitat and benefit the global climate.



Certification



Our sit-stand desk frames are now Global Green Tag certified.



LEAP SINGLE



LEAP BENCH



ZOOM



ROUND-E

Global Green Tag is one of the world's most robust, trusted and widely recognised ecolabels. The globally trusted certification standards are recognised worldwide.

Global GreenTag independently assures that every product is fitness tested and certified under one of their two leading certification programs that use the world's best scientific methods. That's why they have earned the reputation and trust of thousands of buyers, hundreds of companies and numerous green building councils, certification bodies and governments around the world.

Reuse and recycling of Waste Electrical and Electronic Equipment.

Edit Office is a registered Recolight member and WEEE certified for all sit-stand desks.

The WEEE Regulations were introduced to the UK in 2007. Their purpose is to make sure Electronic and Electrical Equipment (EEE) is recycled; keeping this harmful waste stream from landfill. The regulations aim to improve the environmental performance of businesses that manufacture, supply, use, recycle and recover EEE. You may have obligations under the WEEE Regulations if you are a business which sells electrical or electronic equipment.

Working with recycling and logistic operators.

Recolight use Approved Authorised Treatment Facilities to recycle waste. This ensures that the waste is treated responsibly, maximising the amount of recycling that can be achieved and its impact on the environment.

We have full duty of care traceability – we know exactly where the waste we collect has come from, and how and where it gets recycled.

Recolight Members recognise that WEEE compliance is about more than just ticking a box and are actively committed to protecting the environment.





Taavetti Office Furniture Online

The Capitol
431 Union Street
Aberdeen
AB11 6DA

